

December 2023

Dear Parents & Carers,

We have had a lovely half term at school. The children have worked incredibly hard and are ready for a well-earned break!

This half term we have enjoyed:

- An amazing Christmas treat from FOTS – we had a magic show by Magic Tom for everyone to enjoy this week. Thank you to FOTS!
- Whole school celebrations and activities for Children In Need. Thank you for your support - we raised £296.91,
- Celebrating and raising awareness through Anti-bullying Week. Andy and the Odd Socks even sent our school a message on X,
- KS1 and KS2 Assemblies from the NSPCC programme – Speak out. Stay Safe.
- Raising awareness of how to be safe through Brake's Road Safety Week,
- Whole school music percussion workshops through Wakefield Music Service,
- Year 3 and Year 4 parent workshops – thank you to everyone who attended (great sewing skills everyone!),
- Celebrating and learning about Diwali,
- A special cooking event led by the school council representatives from Reception to Year 6 with our school meal provider CH & Co,
- Sports coaches as part of our PE offer with Year 5 and Year 6,
- Singing club for KS2,
- Sports club for KS1,
- Lunchtime sports club with the sports coaches – all invited,
- Weekly swimming lessons for Year 5, including water safety,
- Weekly Forest School sessions outside in our school grounds for all children,
- Music lessons from Wakefield Music Services (optional).

We have also offered invites to:

- a wellbeing session on 'Anxiety' for parents & carers,
- the KS1 Christmas Performance,
- the EYFS Christmas Song Medley,
- our Year 3 and Year 4 Christmas Carols,
- our Year 5 and Year 6 Sing along carols.

Staffing Update

A warm welcome to:

- Mrs Siddique and Mrs Long who have joined our teaching assistant team.
- Miss Collinson and Mrs Baker who have joined our lunchtime supervisor team.

FOTS Update (Friends of the School)

A BIG thank you for all your support with our Christmas raffle which raised over £600 for school funds. We look forward to more fund-raising events next year, including our Summer Fair which will be on Thursday 13th June at 3:30pm.

Sports Update

This half term saw a group of children from Years 1 and 2 enter our first ever off-site competition for Key Stage 1: the competition was athletics and we won! We are so proud of their efforts and how they represented the school.

Next half term, Elite Kids Coaching will be hosting an after-school multi-sports club for children in Key Stage 2. They will also be delivering a range of games and activities for children in Key Stage 1 during their PE lessons.

Parent Survey

Thank you to everyone who has taken the time to complete the Autumn survey. We will share the results with you next term.

KS1 Family Numeracy Programme

We have been given the exciting opportunity by White Rose Education, in partnership with Wakefield Council, to offer our parents/carers of children in Year 1 and Year 2 to attend a Family Numeracy Programme.

This programme has been designed to create a positive learning experience for both adults and children through a series of engaging, activity-based sessions. All three sessions intend to involve both parents/carers and children. Refreshments will be provided at each session and, after attending each session, there will be free games and resources available to take home.

The dates for the sessions are 21st February, 28th February and 6th March.

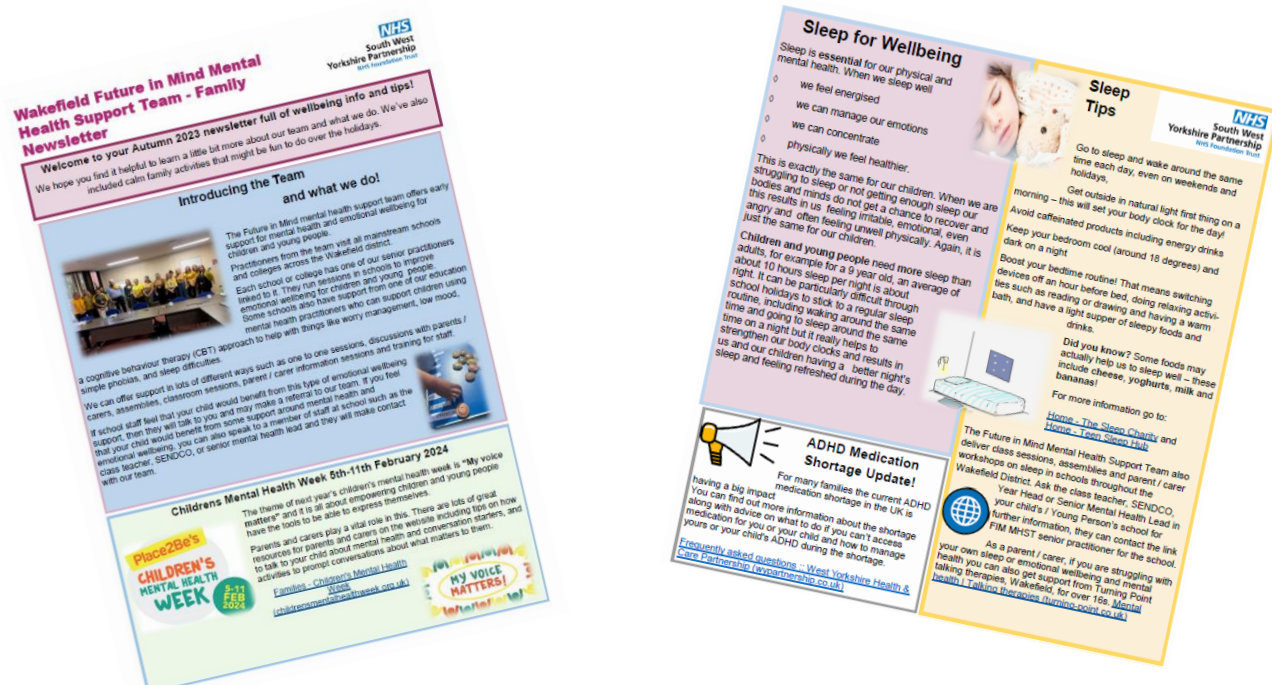
School Day – Times

Just a polite reminder that school doors are open at 8:50am and close at 9:00. The perimeter gates will be locked at 9:10. Please aim to be at school for 8:50, children who arrive at 9:00 miss 10 minutes of learning each day which is 50 minutes per week.

KS1 finish at 3:15 and KS2 children finish at 3:20pm. If you are late collecting your child from school there will be a £10 late collection fee applied through Newts. This also applies to children who are collected late from Newts.

Mental Wellbeing Information & Support

Please find attached an additional newsletter from Wakefield Future in Mind Mental Health Support Team.



WF Happy Healthy Holidays



WF Happy Healthy Holidays programme provide a winter holiday of free activities and food for school age children (from Reception to year 11) eligible for income – related free school meals throughout the district taking place on the 2nd-5th January.

To find out more and book free activities visit

<https://www.wakefieldfamilies-together.co.uk/community-support/happy-healthy-holidays/>

Or scan the QR code



Is your child experiencing fears and worries?

We are delighted to share with you an NHS-funded service for children aged 7-12 designed to build resilience and life-long skills - Lumi Nova.



What is Lumi Nova?

An intergalactic adventure game, Lumi Nova empowers young people to fight fears and manage worries.

Whilst exploring planets, and earning treasure, your child breaks their fears and worries down into manageable steps, learning life-long skills and building resilience.

See the additional newsletter for more information or visit

<https://luminova.app/get-access>

Here for children all year round

Because fears and worries don't take time off for the holidays

Lumi Nova - A fun digital therapy for child anxiety (7-12 years)*

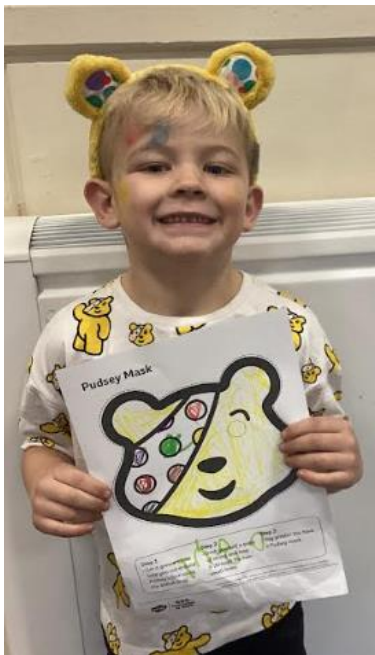
Download the free app today

In partnership with **NHS**

LUMI NOVA TALES OF COURAGE

Not recommended for use with children who have severe anxiety, are in crisis, have suicidal thoughts or are at risk of self harming without clinical supervision. See instructions for use: bit.ly/luminova-ifu





<u>Dates for your diary</u>	<u>Event</u>
INSET Days 2023/2024 (School is closed on the following days).	Monday 4 th September Monday 20 th November Friday 22 nd December Thursday 2 nd May (Polling Day) Monday 22 nd July
Thursday 21 st December	School breaks up for Christmas
Friday 22 nd December	INSET Day - school is closed to all children
Monday 8 th January 2024	School re-opens Term 2
Week beginning Monday 8 th January	Whole school Art week
Monday 15 th January	Teddy Bear's Picnic – Nursery Parents/Carers (see previous information)
Friday 19 th January	Year 3 and Year 4 visitor/workshop - Fossils
Monday 22 nd January	Parliament visitor – KS2 assembly and Year 5/6 workshop
Tuesday 23 rd January	Year 5 and Year 6 Parent Workshop (see previous information)
Friday 26 th January	KS1 Toy Museum Visit to school
Friday 2 nd February	NSPCC Number Day – children can come dressed as a digit/number themed outfit on this day.
Week beginning Monday 5 th February	Children's Mental Health Week
Tuesday 27 th February	Year 5 visit to Cannon Hall Farm for a WWII evacuee day in conjunction with Barnsley Museum.
Wednesday 21 st -Friday 23 rd February	Year 6 Residential visit to Robin Wood.
21 st & 28 th February 6 th March	KS1 Family Numeracy Programme (see previous letter)
Thursday 13 th June	Save the Date – NHCS Summer Fair 3:30pm

Attendance Update: Illness

Please see below information from the Chief medical officer:

There is wide agreement among health professionals and educational professionals that school attendance is vital to the life chances of children and young people. Being in school improves health, wellbeing and socialisation throughout the life course. The greatest benefits come from children and young people attending school regularly. It is usually appropriate for parents and carers to send their children to school with mild respiratory illnesses. This would include general cold symptoms: a minor cough, runny nose or sore throat. However, children should not be sent to school if they have a temperature of 38°C or above.

Please see the following link for more information (NHS Guidance: Is my child too ill for school?). If you need any support, please contact school. There is also an additional letter attached with the newsletter to answer questions about attendance.

<https://www.nhs.uk/live-well/is-my-child-too-ill-for-school/>

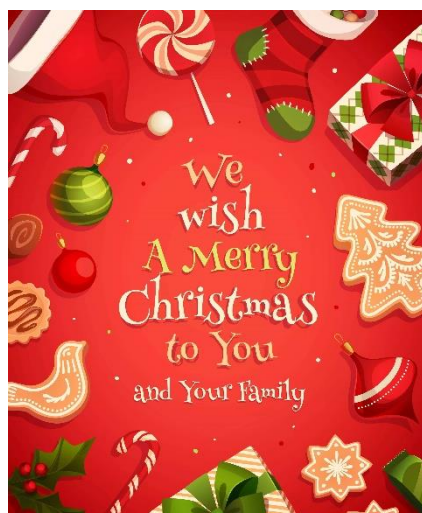
Thank you for your continued support this half term. Please do not hesitate to contact school if you have any questions or concerns.

Please remember to let the school office know if you have changed your phone number or you have moved house. We would always encourage you to let school know more than two emergency contact names and numbers.

Wishing you and your family a safe and restful break.

Kind regards,

Mrs Wheatley & all the staff at Newton Hill Community School



Attendance

Please can you let school know if your child is going to be absent from school.

If we do not know the reason why your child is absent, we will follow our procedures - this is a telephone call to all contacts and a home visit. If we are unable to make contact with

you, we will refer the absence to the local authority. If you know your child is going to be absent, please complete an absence request form (available from the school office). Please note holidays in term time are not permitted. Following Local Authority guidance, penalty notices may be issued for holidays taken in term time. If your child is absent from school, please let the school office know as soon as possible by leaving a voicemail through the school telephone system or emailing admin@newton-hill.org.uk. Thank you for your cooperation.



Free School Meals

If your circumstances have changed you may be eligible for Free School Meals (FSM) until Year 6, please contact school as the application process is changing. There is no difference for how children order or receive meals if they are eligible for FSM. If your child receives FSM (Reception to Year 6) the school will also receive additional funding to support your child. Children in receipt of FSM also received confidential support with educational visits.

School meals for children in Reception and KS1 are FREE – this is part of the universal free school meal offer.

Hepworth Art Gallery

Families are invited to join the Hepworth Art Gallery at weekends and during the Wakefield school holidays to enjoy a day out and get creative as a family while exploring the galleries and garden. We also invite our local community to share our warm space this winter. Families are welcome to sit, read, play, draw and stay as long as they wish.

Entry is FREE for Wakefield residents and under 18s.

<https://hepworthwakefield.org/your-visit/visiting-with-a-family/>

Our Local Community

Just a polite reminder to park safely and to be respectful to our local residents when picking up and dropping off particularly on Newton Avenue and East Street. Thank you.



School Uniform

Please can we ask that all uniform/property is clearly labelled.

Thank you to everyone who follows our uniform expectations. The pre-loved uniform is always available – please contact Mrs Dundas for further information or support. We have a range of uniform – all ages. Please make use of the uniform available – all requests will be dealt with confidentially.

Safeguarding

If you have any safeguarding concerns or need any support or advice, please do not hesitate to contact the school.



Our Designated Safeguarding Leads (DSL) are: Mrs Wheatley, Mrs Whelerton, Mrs Luck, Mr Paine, Mrs Dundas, Mrs Myton and Miss Land.

<https://www.nspcc.org.uk/keeping-children-safe/online-safety/> This website offers advice and guides for parents which you may find useful.

<https://www.nspcc.org.uk/keeping-children-safe/support-for-parents/pants-underwear-rule/>

If you need support or advice, you can also contact Wakefield Social Care Direct on 0345 8 503 503. There are other numbers you may find useful on our school website under Safeguarding.

Keeping Safe Online

You may find the following sites and information useful:

[Keep Children Safe Online: Information, Advice, Support - Internet Matters](#)

[What is the metaverse? - What parents need to know | Internet Matters](#)

[Top tips for staying safe online at Christmas - UK Safer Internet Centre](#)

[Social Media Checklists | SWGfL](#)

Mental Health Team

We have a number of staff members who are mental health first aiders who can offer advice and support for your child and you. Please contact the school if you would like any support.



Information from Wakefield's Health Improvement Officer

We are looking for parents and carers with children aged 0 – 5yrs to join us for a brand-new programme, HENRY, which will be running from three of the Wakefield Family hubs.

HENRY is a free programme which is starting in January. The free 8 – 10 week group programme will explore how to give your child/children a healthy start in life. We will explore:

- Setting goals*
- Juggling life with young children*
- Responding to children's needs without giving in to demands*
- Positive mealtimes*
- Ideas for active play*
- Food & portion sizes for under 5's*
- Managing children's behaviour for a happier home*
- Planning for the future.*

Everyone who attends the programme will receive a free parenting pack and resources for use at home including story books, reward charts and soft ball.

If you are interested and want to find out more or book your place onto the HENRY programme, call or pop into your nearest HENRY delivery family hub.

Sunbeam Family Hub – Lupset Crescent, Wakefield, WF2 8RH. Contact: 01924 302333.

Pomfret Family Hub – Rookhill Road, Pontefract, WF8 2DD. Contact: 01977 722644.

Cedars Family Hub – Barnsley Road, Hemsworth, WF9 4PU. Contact: 01977 72215.

January HENRY Dates:

- Cedars Family Hub – Start Tuesday 9th January 2024 - 9.45am – 11.45am*
- Pomfret Family Hub – Start Tuesday 16th January 2024 - 1pm – 3pm*
- Sunbeam Family Hub – Starts Wednesday 17th January 2024 - 9.30am – 11.30am*

Unplanned School Closures – Snow/Adverse Weather

Although snow is welcomed by our children it can, as you know, cause issues with schools. We will always aim to notify you of any closures at the earliest opportunity and appreciate that this may be at short notice.

In the unlikely event of a school closure, for reasons out of our control, we will contact you via Parent Hub. We will also display messages/updates on our school website www.newtonhill.wakefield.sch.uk.

We will always do our best to stay open, but if for any reason we have to close *during the day* we will contact you via Parent Hub, and information will be displayed on our website. A member of the Leadership Team will always stay on site until all children have been collected.

Newts Provision – Adverse Weather

During adverse weather conditions, various considerations need to be assessed to see if school can open safely – for example the number of members of staff who can get to work safely, site safety and access.

Therefore, if there are any occasions of adverse weather (snow/treacherous conditions), Newts provision will not be open for breakfast club. This is to allow sufficient time for school to assess if school can open safely and if there are enough staff able to travel to school safely.

Messages will be sent to all parents via Parent Hub as reminders should this be the case and we will always give advance notice if weather warnings are issued. We will aim to notify you by 7am should this be the case. We will always try to stay open during adverse weather conditions and school may offer a later opening time rather than a full closure depending on the circumstances.

August 2023						
M	T	W	T	F	S	S
	1	2	3	4	5	6
7	8	9	10	11	12	13
14	15	16	17	18	19	20
21	22	23	24	25	26	27
28	29	30	31			

September 2023						
M	T	W	T	F	S	S
				1	2	3
4	5	6	7	8	9	10
11	12	13	14	15	16	17
18	19	20	21	22	23	24
25	26	27	28	29	30	

October 2023						
M	T	W	T	F	S	S
						1
2	3	4	5	6	7	8
9	10	11	12	13	14	15
16	17	18	19	20	21	22
23	24	25	26	27	28	29
30	31					

November 2023						
M	T	W	T	F	S	S
		1	2	3	4	5
6	7	8	9	10	11	12
13	14	15	16	17	18	19
20	21	22	23	24	25	26
27	28	29	30			

December 2023						
M	T	W	T	F	S	S
				1	2	3
4	5	6	7	8	9	10
11	12	13	14	15	16	17
18	19	20	21	22	23	24
25	26	27	28	29	30	31

January 2024						
M	T	W	T	F	S	S
1	2	3	4	5	6	7
8	9	10	11	12	13	14
15	16	17	18	19	20	21
22	23	24	25	26	27	28
29	30	31				

February 2024						
M	T	W	T	F	S	S
			1	2	3	4
5	6	7	8	9	10	11
12	13	14	15	16	17	18
19	20	21	22	23	24	25
26	27	28	29			

March 2024						
M	T	W	T	F	S	S
				1	2	3
4	5	6	7	8	9	10
11	12	13	14	15	16	17
18	19	20	21	22	23	24
25	26	27	28	29	30	31

April 2024						
M	T	W	T	F	S	S
1	2	3	4	5	6	7
8	9	10	11	12	13	14
15	16	17	18	19	20	21
22	23	24	25	26	27	28
29	30					

May 2024						
M	T	W	T	F	S	S
		1	2	3	4	5
6	7	8	9	10	11	12
13	14	15	16	17	18	19
20	21	22	23	24	25	26
27	28	29	30	31		

June 2024						
M	T	W	T	F	S	S
					1	2
3	4	5	6	7	8	9
10	11	12	13	14	15	16
17	18	19	20	21	22	23
24	25	26	27	28	29	30

July 2024						
M	T	W	T	F	S	S
1	2	3	4	5	6	7
8	9	10	11	12	13	14
15	16	17	18	19	20	21
22	23	24	25	26	27	28
29	30	31				

- = Bank Holidays
■ = School Holidays
■ = UK Parliamentary, West Yorkshire Combined Authority Mayoral and District Council Elections (schools will need the authorisation of the Returning Officer if they are to be used as a Polling Station and wish to remain open on this day. Otherwise schools used as a polling station should be closed for INSET). Schools not used for election purposes may arrange alternative closures for INSET. Individual schools may decide the dates of the remaining 4 INSET dates.

Number of pupil days:	195
Less INSET days to be fixed:	5
Total number of pupil days:	190